

 TOYOTA

*Yaris* 06





### ***Yaris CE.***

Everything you need: nothing more or less. Yaris CE lets you hit the road running with its sporty profile, crisp handling and comfy interior. Built without compromise, the exceptionally thrifty Yaris CE comes equipped with a host of essential features that make it one of the best deals going. Available in 3-door only.



### ***Yaris RS.***

Step up to the ultimate Yaris for performance and style in your choice of 3- or 5-door. Both versions come equipped with design flourishes like side skirts, rear spoiler, aluminum alloy wheels, and fog lamps. Not to mention front sport seats and an AM/FM/MP3/CD 6-disc changer with 4-speakers.



### ***Yaris LE.***

Expand your options with the 3- or 5-door Yaris LE – outfitted with a not-so-standard list of features and an available option package that gives you everything from safety extras like Antilock Braking System (ABS), and Electronic Brake force Distribution (EBD), to the added luxuries of air conditioning, power windows and keyless entry.

## *Meet Yaris.*

There is something special about Yaris. Not just how it looks. Or takes a corner. It is something deeper. Because in its own small way, Yaris rewrites the rules for what a car can be.

Hailed as the pride of Toyota, 2006 Yaris was conceived to be a truly global car – smartly designed for life in the modern world (wherever in the world you happen to be).

Yaris is what happens when Toyota's design and technology experts are given the freedom to explore new directions in automotive engineering.

The result?

A life-sized hatchback that looks and performs like nothing else in its class – squeezing an enormous amount of innovation into the curvy contours of its astonishingly compact frame.

And yes, it's a blast to drive.



## *Ready for action.*

Setting the pace for busy urban lifestyles, Yaris RS delivers lively performance, bold-faced style and an extraordinary ability to squeeze into even the coziest of parking spaces.



## ***Inside story.***

Designed for your viewing pleasure – Yaris RS lights up the night with amber-lit dual-dial Optitron-style meters – set against a jet black instrument panel. And define your personal comfort zone with exclusive touches like front sport seats and leather-wrapped 3-spoke tilt steering wheel.





***Strong on style.***

Every line and curve of its body design plays upon the theme of strength and muscularity: rising up from the wide front grille and wraparound bumpers to the S-shaped door panels. Toyota designers created Yaris to flow in a single unified shape – even making the “B” pillars black – to sharpen its profile when viewed from the side.





## *Handling with care.*

Featuring an all-new platform and a suspension system developed specifically for it, Yaris will thrill you with its superior maneuverability and lively handling. Wheels are positioned at the four extremes of the body for enhanced stability and control.

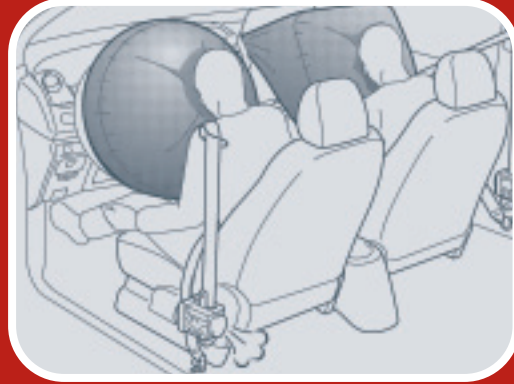




## ***Mission control.***

Yaris expands your sense of interior space – and legroom – by placing the instrument panel vertically right in the centre of the dash. Panel finished in silver for the CE and LE with green lighting. Every Yaris model lets you explore available sound options from the AM/FM CD with 2- or 4-speakers right up to the AM/FM/MP3/CD 6-disc changer with 4-speaker system that comes standard with RS.





### ***Safe & sound.*** Security from every angle.

Yaris's body is built to absorb shock and disperse energy to minimize the force of impact. Combine this with a highly rigid cabin forged from high-strength steel and it is clear that Yaris protects you. Inside the cabin, Yaris further steps up the safety for drivers and passengers alike with a standard dual-stage SRS (Supplemental Restraint System) Airbag System and useful innovations like front seats that can help to reduce whiplash effect in low-speed collisions.



### ***Power player.*** The Yaris 1NZ-FE Engine.

Expect years of brilliant and reliable performance from Yaris – powered by a 1.5 litre, 4-cylinder in-line, 16-valve, 1NZ-FE engine. Utilizing the latest engineering technologies, the Yaris engine enjoys the winning combination of VVT-i (Variable Valve Timing with intelligence), DIS (Direct Ignition System) and ETCS-i (Electronic Throttle Control System with intelligence) to deliver improved fuel economy, higher performance, quietness and cleaner emissions.



The backseat of the Yaris RS tumbles and folds out of the way to give you a uniform flat surface – not to mention .738 cubic meters (26 cubic feet) of storage capacity. That's enough room to carry everything from skateboards and knapsacks to groceries and gardening gear.



### ***Space to move.***

Impress your friends and strangers alike with all the ways you can fit people and luggage into your surprisingly roomy 3- or 5-door Yaris Hatchback (*or maybe just keep the good news to yourself*). Make room for family and friends of every size and shape with the rear bench seat with fold-down seat back – standard on CE and LE.





Enhance the look and functionality of your new Yaris by choosing from the following list of Accessories:

- Air conditioning
- Alloy wheels
- All season mats
- Ashtray and lighter
- Audio systems
- Block heater
- Body side moulding
- Cargo box
- Cargo liner
- Cargo net
- Car tent
- Carpet mats
- Door sill protectors
- Electrochromic rear view mirror with digital compass
- Exhaust tip
- Front centre armrest
- Hood deflector
- Lowering springs
- Moulded dash kit
- Performance exhaust
- Rear spoiler
- Roof rack
- Roof rack - bike adaptor
- Roof rack - ski adaptor
- Security system
- Security upgrade
- Shift knob
- Side skirts
- Side window visors
- Splash guards
- Subwoofer
- Wheel locks

Yaris accessories clockwise from top left: Cargo net, Front centre armrest, Electrochromic rear view mirror with digital compass and Audio systems.

Facing page: Yaris is shown all dressed up with a performance exhaust, aluminum alloy wheels, side skirts, a rear spoiler, hood deflector, roof rack with accessories and side window visors.

## ***Dress it up. Drive it out.***

Express yourself. Take your new Yaris to a whole new level of self-expression by adding any of the Toyota Accessories custom designed for your model. It's a great way to personalize your new vehicle and optimize its appearance at the same time. Ask your Toyota Dealer. To find the Toyota Dealer nearest you, go to [toyota.ca](http://toyota.ca) or call **1-888-TOYOTA-8**.



1E7 SILVER STREAK MICA

3P0 ABSOLUTELY RED

209 BLACK SAND PEARL

8T0 BLAZING BLUE METALLIC

068 POLAR WHITE

4S9 COPPER ORANGE MICA

8T1 BAYOU BLUE METALLIC

# Yaris vehicle coverage.

NEW VEHICLE WARRANTY SUMMARY  
No Deductibles – No Transfer Fees

### Comprehensive Coverage – 3 years or 60,000 km

This warranty includes 24 hour Roadside Assistance and other benefits, as well as coverage of repairs on any part of the vehicle that is defective in material or workmanship under normal use and maintenance. Different warranties apply to original tires.

### Powertrain Components – 5 years or 100,000 km

This warranty covers repairs to powertrain components that are defective in material or workmanship under normal use and maintenance.

### Major Emission Control Components – 8 years or 130,000 km

This warranty covers repairs to specified major emission components that are defective in material or workmanship under normal use and maintenance.

### Corrosion Perforation – 5 years unlimited distance

Any sheet metal found, under normal use, to have developed a perforation from corrosion due to defects in material or workmanship.



With Extra Care Protection you receive inflation protected coverage from mechanical failures, road emergencies, and much more. It's the most affordable way to guarantee your peace of mind. Consult your Toyota Dealer for details.



### TOYOTA EXPERIENCE

The part you can't replace

Toyota Dealers are dedicated to making the experience of owning a Toyota both satisfying and rewarding. Our highly skilled, Toyota-trained technicians are here to make sure you enjoy many years of trouble-free driving. "That new Toyota feeling - we help you keep it."



If you're looking at leasing or financing, we're here to help. We provide competitive interest rates, flexible terms, and an easy online pre-approval process. The toughest decision should be choosing which Toyota you want. Visit us at [www.toyotafinancialservices.ca](http://www.toyotafinancialservices.ca).



Toyota Canada and its Dealers are proud sponsors of Canadian Special Olympics.



**Toyota Graduate Program** This program assists new graduates in their purchase of a New or Certified Used Toyota. The program differs depending on the model chosen. Be sure to ask your Dealer when purchasing your Toyota. Some conditions may apply.



# Yaris 06.

Yaris Features					
INTERIOR	3-DR CE	3-DR LE	5-DR LE	3-DR RS	5-DR RS
• AM/FM CD, 2-Speakers	●				
• AM/FM CD, 4-Speakers	○	●	●		
• AM/FM/MP3/CD 6-Disc Changer, 4 Speakers	○	○	○	●	●
• Cabin Air Filter, Rear Seat Heater Ducts	●	●	●	●	●
• Air Conditioning	○	○	○	○	○
• Front Bucket Seats	●	●	●		
• Front Sport Seats				●	●
• Driver Seat Recline, Headrest-Vertical Adjustments	●	●	●	●	●
• Front Passenger Seat Recline, Headrest-Vertical Adjustments	●	●	●	●	●
• Rear Bench Seat w/Fold-Down Seat Back, Headrest-Vertical Adjustments	●	●	●		
• 60/40 Split Rear Bench Seat w/Fold-Down Seat Back, Flat Folding Rear Seats w/Slide, Vertical Headrest Adjustments				●	●
• Fabric Seat Material	●	●	●	●	●
• Passenger Side Rear Walk-In Assist	●	●		●	
• Power Door Locks			●		●
• Centre-Mounted Instrument Cluster w/Tachometer	●	●	●	●	●
• Dual Vanity Mirrors	●	●	●	●	●
• Interior Trunk/Cargo Access	●	●	●	●	●
• 3-Spoke Tilt Steering Wheel	●	●	●	●	●
• Leather-Wrapped Steering Wheel				●	●
• Leather-Wrapped Shift Knob (Manual Only)				●	●
• Semi-Fabric Door Trim	●	●	●	●	●
• Driver Footrest	●	●	●	●	●
• Carpeting, Front Carpet Floor Mats	●				
• Carpeting, Carpet Floor Mats		●	●	●	●
CONVENIENCE					
• Digital Clock	●	●	●	●	●
• Front & Rear Cup Holders	●	●	●	●	●
• Door Map Pockets, Driver & Front Passenger Seat Back Pockets	●	●	●	●	●
• Front Centre Console Box, Upper & Lower Glove Boxes	●	●	●	●	●

● – Standard ○ – Optional



# Yaris 06.

Yaris Features					
SAFETY	3-DR CE	3-DR LE	5-DR LE	3-DR RS	5-DR RS
• Driver Airbag Supplemental Restraint System (SRS)*	●	●	●	●	●
• Front Passenger Airbag (SRS)*	●	●	●	●	●
• Front Seatbelt Pre-Tensioners & Force Limiters	●	●	●	●	●
• All-Position 3-Point Lap & Shoulder Belts	●	●	●	●	●
• Adjustable "B" Pillar Shoulder Belt Anchors			●		●
• Anchor Points for Child Restraint Seats	●	●	●	●	●
• Child Protector Rear Door Locks			●		●
• Assist Grips	●	●	●	●	●
• Remote Fuel Lid Release	●	●	●	●	●
• Low Fuel, Low Washer Fluid, Door Ajar, Front Driver & Passenger Seat Belt Warnings	●	●	●	●	●
EXTERIOR					
• Full Wheel Covers	●	●	●		
• Aluminum Alloy Wheels, Wheel Locks				●	●
• Manually Adjustable, Foldable Exterior Mirrors	●				
• Power Remote-Control, Foldable Exterior Mirrors		●	●	●	●
• Electric Rear Window Defroster w/Timer	●	●	●	●	●
• Tinted Glass	●	●	●	●	●
• Coloured Bumpers, Coloured Door Handles	●	●	●	●	●
• Front & Rear Splash Guards		●	●		
• Coloured Mirrors, Side Skirts, Rear Spoiler				●	●
• Intermittent Wipers, Mist Feature	●	●	●	●	●
• Rear Window Wiper/Washer		●	●	●	●
• Reflector Style, Halogen Headlamps	●	●	●	●	●
• Fog Lamps				●	●
• RS Grille Badge				●	●

● – Standard ○ – Optional

\* **Airbag Notice:** The 2006 Yaris features a driver & front passenger airbag Supplemental Restraint System (SRS) which activates only in a full-frontal collision of sufficient magnitude to inflate the bags. In moderate frontal collisions, the airbags may not inflate; in a rear or side collision the airbags are designed not to inflate, so the primary protection is provided by the lap and shoulder belt system. *Seatbelts must be worn at all times by all occupants.*



# Yaris 06.

## Yaris Packages

		3-DR CE	3-DR LE	5-DR LE	3-DR RS	5-DR RS
<b>3-DR LE Package</b>	• Antilock Braking System (ABS), Electronic Brake force Distribution (EBD), Air Conditioning, Power Windows, Power Door Locks, Keyless Entry		○			
<b>5-DR LE Package</b>	• Antilock Braking System (ABS), Electronic Brake force Distribution (EBD), Air Conditioning, Power Windows, Keyless Entry			○		
<b>3-DR RS Package</b>	• Air Conditioning, Power Windows, Power Door Locks, Keyless Entry				○	
<b>5-DR RS Package</b>	• Air Conditioning, Power Windows, Keyless Entry					○

## Yaris Specifications

MECHANICAL		3-DR CE	3-DR LE	5-DR LE	3-DR RS	5-DR RS
<b>Engine</b>	• 1.5 litre, 4-Cylinder, DOHC, 16-Valve, Variable Valve Timing w/ intelligence (VVT-i), Sequential Multiport Electronic Fuel Injection	●	●	●	●	●
<b>Compression Ratio</b>	• 10.5:1	●	●	●	●	●
<b>Horsepower</b>	• 106 hp (79 kW) @ 6000 rpm	●	●	●	●	●
<b>Torque</b>	• 103 lb.ft. (139 N.m.) @ 4200 rpm	●	●	●	●	●
<b>Suspension</b>	• Front: MacPherson Gas Struts, Coil Springs, Stabilizer Bar • Rear: Torsion Beam Type, Coil Springs	●	●	●	●	●
<b>Drivetrain</b>	• Front Engine/Front Wheel Drive	●	●	●	●	●
<b>Transmission</b>	• 5-Speed, Manual • 4-Speed, Automatic, Super Electronically Controlled Transmission (Super ECT), Overdrive	○	○	○	○	○
<b>Brakes</b>	• Power Assisted, Front Discs, Rear Drums • Antilock Braking System (ABS), Electronic Brake force Distribution (EBD)	○	○	○	●	●
<b>Steering</b>	• Rack & Pinion w/Electric Power Assist	●	●	●	●	●
<b>Tires</b>	• P175/65R14, All-Season Radials, Compact Spare • P185/60R15, All-Season Radials, Compact Spare	●	●	●	●	●

● – Standard ○ – Optional

**Toyota Canada Inc.** Every effort has been made to ensure the specifications and equipment shown are accurate based on information available at time of printing. In some cases, certain changes in standard equipment, options or product delays may occur which would not be reflected in this brochure. Toyota Canada Inc. reserves the right to make these changes without notice or obligation. The Toyota website [toyota.ca](http://toyota.ca) – or your Toyota Dealer is your best source for up-to-date information.



# Yaris 06.

## Yaris Specifications

DIMENSIONS		3-DR CE	3-DR LE	5-DR LE	3-DR RS	5-DR RS
<b>Length</b>	• 3825 mm (150.6 in.)	●	●	●	●	●
<b>Width</b>	• 1695 mm (66.7 in.)	●	●	●	●	●
<b>Height</b>	• 1525 mm (60.0 in.)	●	●	●	●	●
<b>WheelBase</b>	• 2460 mm (96.9 in.)	●	●	●	●	●
<b>Tread</b>	• Front: 1480 mm (58.3 in.) Rear: 1470 mm (57.9 in.) • Front: 1470 mm (57.9 in.) Rear: 1460 mm (57.5 in.)	●	●	●	●	●
<b>Seating Capacity</b>	• 5	●	●	●	●	●
<b>Ground Clearance</b>	• 140 mm (5.5 in.)	●	●	●	●	●
<b>Headroom</b>	• Front: 1001 mm (39.4 in.) Rear: 963 mm (37.9 in.) • Front: 1001 mm (39.4 in.) Rear: 953 mm (37.5 in.)	●	●	●	●	●
<b>Leg Room</b>	• Front: 1024 mm (40.3 in.) Rear: 859 mm (33.8 in.)	●	●	●	●	●
<b>Shoulder Room</b>	• Front: 1306 mm (51.4 in.) Rear: 1280 mm (50.4 in.) • Front: 1306 mm (51.4 in.) Rear: 1278 mm (50.3 in.)	●	●	●	●	●
<b>Gross Vehicle Weight</b>	• Manual: 1445 kg (3185 lb) • Automatic: 1465 kg (3230 lb) • Manual: 1452 kg (3200 lb) • Automatic: 1472 kg (3245 lb) • Manual: 1450 kg (3195 lb) • Automatic: 1475 kg (3250 lb) • Manual: 1456 kg (3210 lb) • Automatic: 1477 kg (3255 lb)	●	●	●	●	●
<b>Curb Weight</b>	• Manual: 1043 kg (2300 lb) • Automatic: 1064 kg (2345 lb) • Manual: 1050 kg (2315 lb) • Automatic: 1071 kg (2360 lb) • Manual: 1052 kg (2320 lb) • Automatic: 1073 kg (2365 lb) • Manual: 1059 kg (2335 lb) • Automatic: 1082 kg (2385 lb)	○	○	○	○	○
<b>Cargo Capacity</b>	• 0.228 m <sup>3</sup> (8.1 cu.ft.) Behind Front Seats-Max. • 0.693 m <sup>3</sup> (24.5 cu.ft.) • 0.738 m <sup>3</sup> (26.0 cu.ft.)	●	●	●	●	●
<b>Turning Circle</b>	• 9.4 m (30.84 ft.)	●	●	●	●	●
<b>Fuel Capacity</b>	• 42 L (9.2 gal.)	●	●	●	●	●
<b>Fuel Consumption Rating**</b>	• Manual 6.9/5.5 L/100km 41/51 mpg (City/Highway) • Automatic 7.1/5.8 L/100km 40/49 mpg	○	○	○	○	○

● – Standard ○ – Optional

\*\* These estimates are based on the Government of Canada's approved criteria and testing methods. The actual fuel consumption of this vehicle may vary. Refer to the Government of Canada publication *EnerGuide Fuel Consumption Guide*.



## *Different by design.*

Not just another car, Yaris is the first full expression of a design evolution at Toyota – based on a concept we call ‘Vibrant Clarity’. It means that every Toyota from now on will truly push the frontiers in terms of design and performance. ‘Vibrant’ stands for innovation and energy; ‘Clarity’ refers to the rational side of the design equation.

This new direction for Toyota finds its roots in Japanese culture – the balance between ancient wisdom and modern technology – something we refer to as the J-Factor.

But you can call it Yaris – for short.

## *Yaris.ca*



Toyota recognizes its duty to safeguard the environment. To support this concern, our brochure is printed on recycled paper with vegetable-based inks to be fully recyclable. PRINTED IN CANADA C0002-0576E-25 60M

